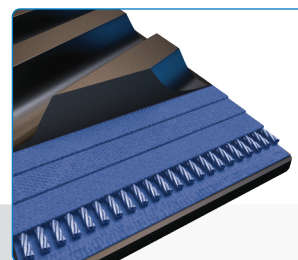


# RUBBER TRACKS FOR **CLAAS® COMBINES**

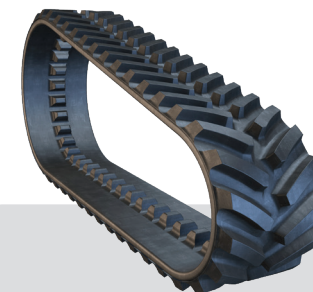
## RUBBER TRACK FOR COMBINES

Today's largest, most powerful combines demand tougher track. As the pioneer, Trackman® has continued to deliver game-changing innovations resulting in the most rugged track available. Take on today's toughest challenges and harsh environments with Trackman®.



**Constructed for Longer Life**  
MAXXTUFF™ steel belting reinforcement is the strongest in the market today.

Wire-ply construction with 50% more wires per inch than our competition.



**HP Plus**  
Double the wire dramatically improves track strength.

Stronger carcass reduces internal track temperatures and improves tread lug performance and wear life.

THE TRUSTED SOURCE FOR THE **TOUGHEST TRACK**

 **Trackman**

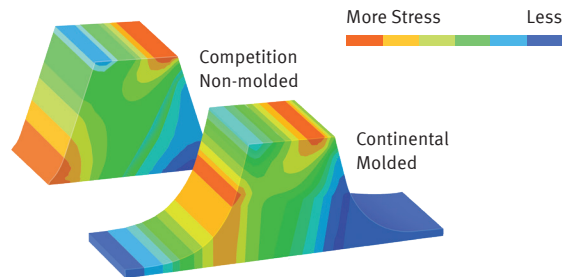




# Trackman RUBBER TRACK SPECIFICATIONS FOR CLAAS®

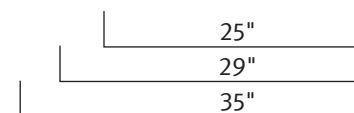
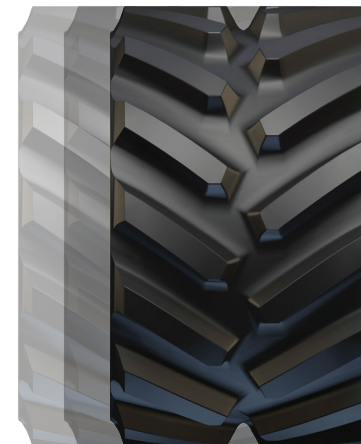
| Product Code          | Vehicle              | Description      | *Warranty Period | Width (in.) | Length (in.) | # of Tread Lugs | Tread Pitch (in.) | Tread Lug Height (in.) | # of Guide Lugs | MAXXTUFF™ Layers | Carcass Thickness (in.) | Ship Weight (lb.) |
|-----------------------|----------------------|------------------|------------------|-------------|--------------|-----------------|-------------------|------------------------|-----------------|------------------|-------------------------|-------------------|
| CLAAS LEXION Combines |                      |                  |                  |             |              |                 |                   |                        |                 |                  |                         |                   |
| 616190                | CLAAS LEXION Combine | Trackman HP Plus | 4-Year           | 25          | 264          | 88              | 6                 | 2.5                    | 44              | 3                | 1.25                    | 970               |
| 616210                | CLAAS LEXION Combine | Trackman HP Plus | 4-Year           | 29          | 264          | 88              | 6                 | 2.5                    | 44              | 3                | 1.25                    | 1080              |
| 616220                | CLAAS LEXION Combine | Trackman HP Plus | 4-Year           | 35          | 264          | 88              | 6                 | 2.5                    | 44              | 3                | 1.25                    | 1260              |

\*For full warranty details, please visit [www.trackmantracks.com](http://www.trackmantracks.com).



## Fully Molded Is Stronger

- Fully molded track equals tougher, longer-lasting track.
- Non-fully-molded has built-in weak points that can lead to early deterioration and failure.
- On top of longer life, you get a more consistent rubber thickness, which leads to greater stability and a smoother ride.



### Contact

Trackman – part of American Rheinmetall  
1115 S. Wayne Street  
St. Marys, Ohio 45885 U.S.A.

1-855-675-3375

[Inquiries@TrackmanTracks.com](mailto:Inquiries@TrackmanTracks.com)



**JUST LIKE OUR TRACK, OUR WARRANTY IS SECOND TO NONE.**  
In accordance with the Trackman Rubber Track warranty, the track is covered against material and/or workmanship defects.

Follow Us 

