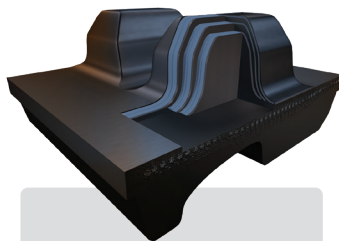


RUBBER TRACKS FOR **CASE IH®**

QUADTRAC®
QUADTRAC® ROWTRAC™
MAGNUM™ ROWTRAC™

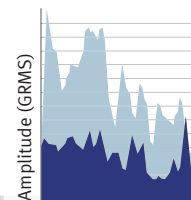
Today's largest, most powerful tractors demand tougher track. That's why Case IH® chose Trackman® to create the world's first positive-drive track. And we continue to deliver groundbreaking innovations resulting in the most rugged track out there. Without question, our track and undercarriage components handle more horsepower and deliver better traction to pull more weight. That means Trackman can take on today's heaviest, most powerful tractors with total confidence.



World's Strongest Drive Lugs
ARMORLUG® Ultra is the first patented drive lug with three fabric layers embedded in the lugs. Easily handles today's biggest, most powerful tractors and is designed to take on more. Lasts as much as 30% longer than any other positive-drive track.



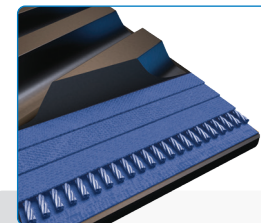
Trackman® RowTech™
Features 70% more tread rubber for greater damage resistance and improved ride quality. Built with five layers of MAXXTUFF™ steel belting in the carcass – the highest concentration of steel belting reinforcement in the market.



Heavy Equipment

■ Standard Track
■ Trackman

Up to 70% Reduction in Vibration
Our exclusive Anti-Vibration Technology™ and advanced tread design greatly reduces vibration by as much as 50% to 70% versus standard track. Dramatically improves comfort, especially in heavy-pull operations.



Constructed for Longer Life
Fully molded lugs deliver unsurpassed durability and longevity.

Wire-ply construction with 50% more wires per inch than our competition.

THE TRUSTED SOURCE FOR THE **TOUGHEST TRACK**

 **Trackman**



Trackman. RUBBER TRACK SPECIFICATIONS FOR CASE IH® TRACTORS

Product Code	Vehicle	Description	*Warranty Period	Width (in.)	Length (in.)	# of Tread Lugs	Tread Pitch (in.)	Tread Lug Height (in.)	# of Guide Lugs	MAXXTUFF™ Layers	Carcass Thickness (in.)	Ship Weight (lb.)
Case IH 9300												
611810	CASE IH 9300	Trackman® **T600 XP AG	4-Year AG, 2-Year SC	30	234	78	6.0	2.0	39	4	1.25	997
Case IH QuadTrac®												
616850	CASE IH Quadtrac	Trackman® **T600 XP AG	4-Year	30	252	84	6.0	2.0	42	3	1.25	1052
616860	CASE IH Quadtrac	Trackman® **T600 XP AG	4-Year	36	252	84	6.0	2.0	42	3	1.25	1242
615270	CASE IH Quadtrac	Trackman® T700 ARMOR AG	4-Year	30	252	84	6.0	2.0	42	4	1.25	1071
615640	CASE IH Quadtrac	Trackman® T700 ARMOR SC	2-Year	30	252	84	6.0	2.0	42	4	1.25	1071
615280	CASE IH Quadtrac	Trackman® T700 ARMOR AG	4-Year	36	252	84	6.0	2.0	42	4	1.25	1310
616260	CASE IH Quadtrac	Trackman® T800 ULTRA AG	5-Year	30	252	84	6.0	2.0	42	4	1.25	1071
611980	CASE IH Quadtrac	Trackman® T800 ULTRA SC	3-Year	30	252	84	6.0	2.0	42	4	1.25	1071
612570	CASE IH Quadtrac	Trackman® T800 ULTRA AG	5-Year	36	252	84	6.0	2.0	42	4	1.25	1310
Case IH Rowtrac™												
617280	CASE IH Row Crop	Trackman® T650 RowTech™	4-Year	16.5	264	88	6.0	1.75	44	5	1.5	764
617290	CASE IH Row Crop	Trackman® T650 RowTech™	4-Year	18	264	88	6.0	1.75	44	5	1.5	811
617140	CASE IH Row Crop	Trackman® T650 RowTech™	4-Year	24	264	88	6.0	1.75	44	5	1.5	1094
617150	CASE IH Row Crop	Trackman® T650 RowTech™	4-Year	30	264	88	6.0	1.75	44	5	1.5	1228

*For full warranty details, please visit www.trackmantracks.com.

**Trackman T600 is intended for use on 555HP and lower.

Please note: tracks used on scraper applications have the noted limited warranty period.

Contact

Trackman – part of American Rheinmetall
1115 S. Wayne Street
St. Marys, Ohio 45885 U.S.A.

1-855-675-3375

Inquiries@TrackmanTracks.com



JUST LIKE OUR TRACK, OUR WARRANTY IS SECOND TO NONE.
In accordance with the Trackman Rubber Track warranty, the track is covered against material and/or workmanship defects.

Follow Us 



AMERICAN MADE.

