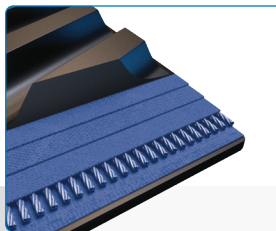




# RUBBER TRACKS FOR **JOHN DEERE®**

## 8000T, 9000T, 8RT, 9RT AND 9RX MODELS

Today's largest, most powerful tractors demand tougher track. It's why John Deere® chose Trackman® to create the first rubber track for its tractors. And Trackman continues to deliver groundbreaking innovations resulting in the most rugged track out there. Without question, our track handles more horsepower and delivers better traction to pull more weight. That means we can take on today's heaviest, most powerful tractors with total confidence.

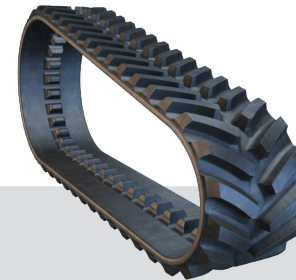


### **Constructed for Longer Life**

Fully-molded lugs deliver unsurpassed durability and longevity.

50% more wires per inch means our track is more durable and longer-lasting than the competition.

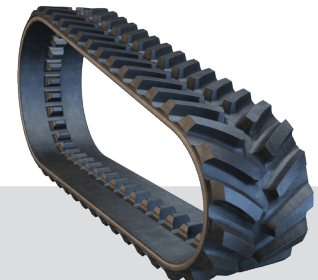
Exclusive patented galvanized cables offer superior corrosion resistance.



### **HP Extreme Track**

MAXXTUFF™ steel belt reinforcement is the strongest in the market today.

Wider center design means better clean-out. Engineered with more usable tread rubber for longer life. 20% thicker carcass resists cuts, punctures and other damage.



### **HP Track**

Double the wire dramatically improves track strength.

Stronger carcass reduces internal track temperatures and improves tread lug performance and wear life.

THE TRUSTED SOURCE FOR THE **TOUGHEST TRACK**

 **Trackman**



# Trackman. RUBBER TRACK SPECIFICATIONS FOR JOHN DEERE® TRACTORS

Product Code	Vehicle	Description	*Warranty Period	Width (in.)	Length (in.)	# of Tread Lugs	Tread Pitch (in.)	Tread Lug Height (in.)	# of Guide Lugs	MAXXTUFF™ Layers	Carcass Thickness (in.)	Ship Weight (lb.)
<b>John Deere 8000T</b>												
527850	JOHN DEERE 8000T	Trackman® HP	4-Year	16	324	108	6.0	2.0	54	3	1.25	873
528240	JOHN DEERE 8000T	Trackman® HP	4-Year	18	324	108	6.0	2.0	54	3	1.25	943
527860	JOHN DEERE 8000T	Trackman® HP	4-Year	24	324	108	6.0	2.0	54	3	1.25	1147
527870	JOHN DEERE 8000T	Trackman® HP	4-Year	30	324	108	6.0	2.0	54	3	1.25	1356
613530	JOHN DEERE 8000T	Trackman® HP EXTREME	4-Year	16	325	84	7.7	2.75	42	4	1.50	969
613540	JOHN DEERE 8000T	Trackman® HP EXTREME	4-Year	18	325	84	7.7	2.75	42	4	1.50	1068
616430	JOHN DEERE 8000T	Trackman® HP EXTREME	4-Year	24	324	72	9.0	2.75	54	4	1.50	1360
616440	JOHN DEERE 8000T	Trackman® HP EXTREME	4-Year	30	324	72	9.0	2.75	54	4	1.50	1636
<b>John Deere 9000T</b>												
616450	JOHN DEERE 9000T	Trackman® HP Extreme	4-Year	30	378	84	9.0	2.75	84	3	1.50	1795
616460	JOHN DEERE 9000T	Trackman® HP Extreme	4-Year	36	378	84	9.0	2.75	84	3	1.50	2250
<b>John Deere 8RT</b>												
612140	JD 8295RT/8320RT/8345RT	Trackman® HP	4-Year	16	354	118	6.0	2.0	59	4	1.25	931
612150	JD 8295RT/8320RT/8345RT	Trackman® HP	4-Year	18	354	118	6.0	2.0	59	4	1.25	1012
613510	JD 8295RT/8320RT/8345RT	Trackman® HP Extreme	4-Year	16	357	92	7.7	2.75	46	4	1.50	1048
613520	JD 8295RT/8320RT/8345RT	Trackman® HP Extreme	4-Year	18	357	92	7.7	2.75	46	4	1.50	1157
616480	JD 8295RT/8320RT/8345RT	Trackman® HP Extreme	4-Year	30	357	78	9.0	2.75	78	4	1.50	1754
<b>John Deere 9030T/9RT</b>												
616490	JD 9430T/9530T/9630T	Trackman® HP Extreme	4-Year AG, 2-Year SC	30	387	86	9.0	2.75	86	4	1.50	2015
616510	JD 9430T/9530T/9630T	Trackman® HP Extreme	4-Year AG, 2-Year SC	36	387	86	9.0	2.75	86	4	1.50	2261
<b>John Deere 9RX</b>												
617080	JOHN DEERE 9RX	Trackman® T700 XP ARMOR AG	4-Year AG, 2-Year SC	30	270	90	6.0	2.0	45	4	1.35	1196
617090	JOHN DEERE 9RX	Trackman® T700 XP ARMOR AG	4-Year AG, 2-Year SC	36	270	90	6.0	2.0	45	4	1.35	1399

\*For full warranty details, please visit [www.trackmantracks.com](http://www.trackmantracks.com).

Please note: tracks used on scraper applications have a 2-year limited warranty.

## Contact

Trackman – part of American Rheinmetall  
1115 S. Wayne Street  
St. Marys, Ohio 45885 U.S.A.

1-855-675-3375

[Inquiries@TrackmanTracks.com](mailto:Inquiries@TrackmanTracks.com)



**JUST LIKE OUR TRACK, OUR WARRANTY IS SECOND TO NONE.**  
In accordance with the Trackman Rubber Track warranty, the track is covered against material and/or workmanship defects.

Follow Us 



AMERICAN MADE.



# Trackman